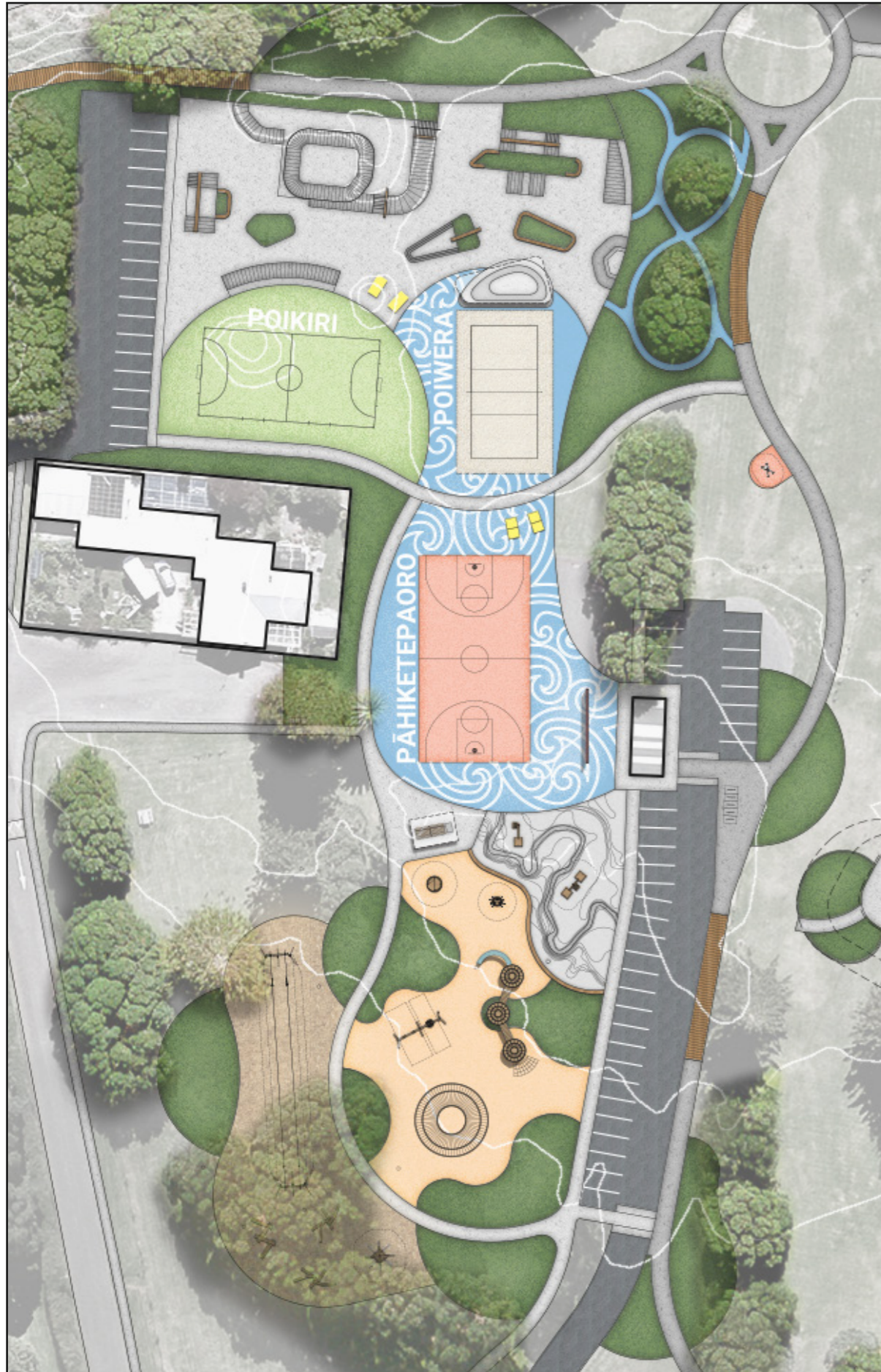




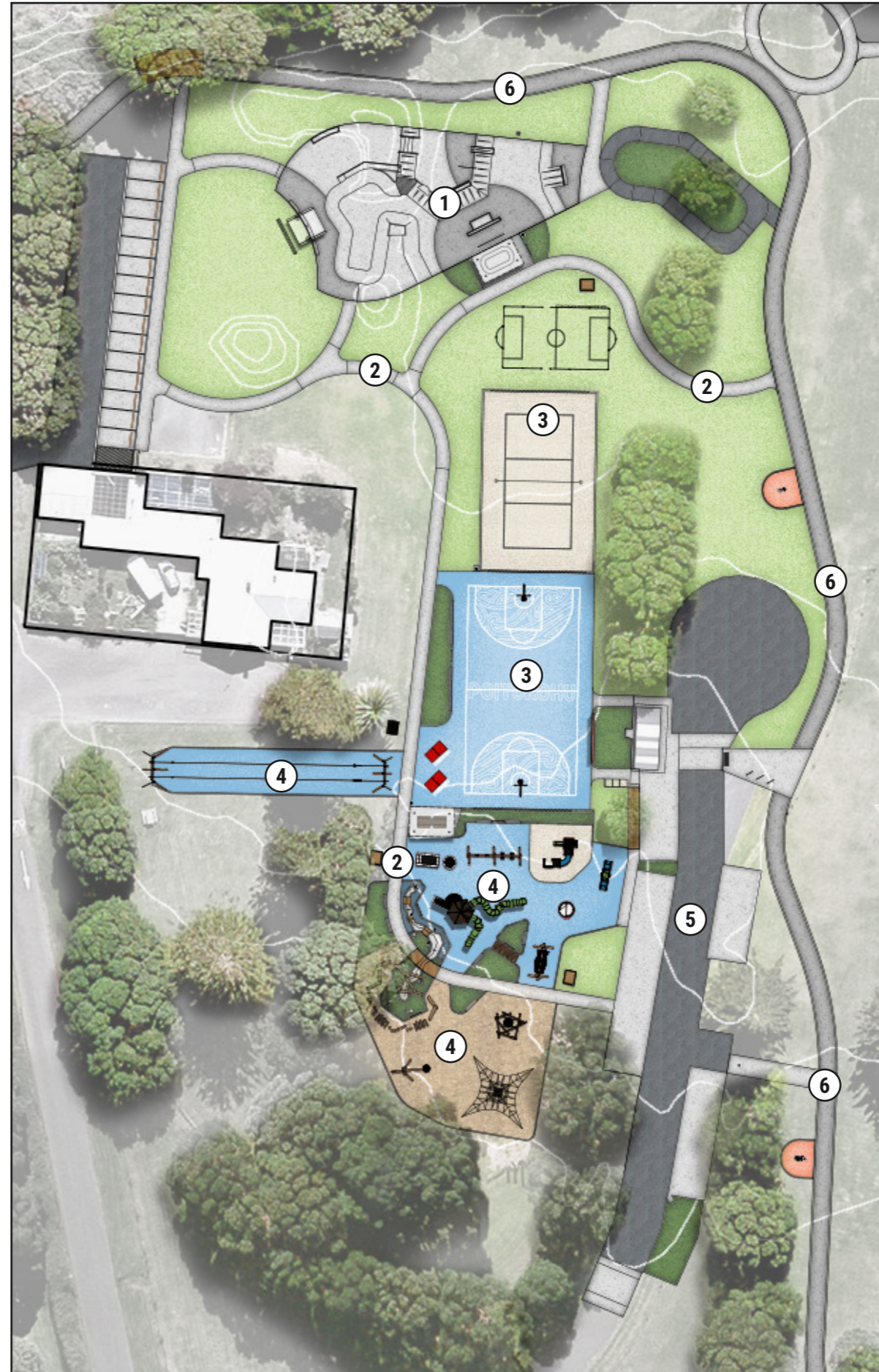
OTUPAIIA DESIGN UPDATE

DECEMBER 2025

ORIGINAL CONCEPT



REVISED DESIGN



DESIGN DEVELOPMENT

- ① SKATEPARK DESIGNED & BUILT
- ② PATH NETWORK IMPROVED
- ③ YOUTH ZONE DESIGN EFFICIENCIES
- ④ PLAYGROUND, NATURE PLAY AND WATER PLAY REDESIGNED TO REDUCE IMPACT TO EXISTING TREES
- ⑤ CARPARK DESIGNED & BUILT
- ⑥ COASTAL WALKWAY DESIGNED & BUILT

OTUPAIIA | REVISED DESIGN

Several design changes have been implemented as we've progressed through detailed design. These changes have come about due to existing features and earlier phases that have now been completed.

Skatepark, Coastal Walkway & Carpark

As part of earlier phases, the skatepark, coastal walkway and carpark have now been completed. Adjusting the original concept was required to insure cohesion between the new and existing spaces and improve path networks.

Existing Playground Trees

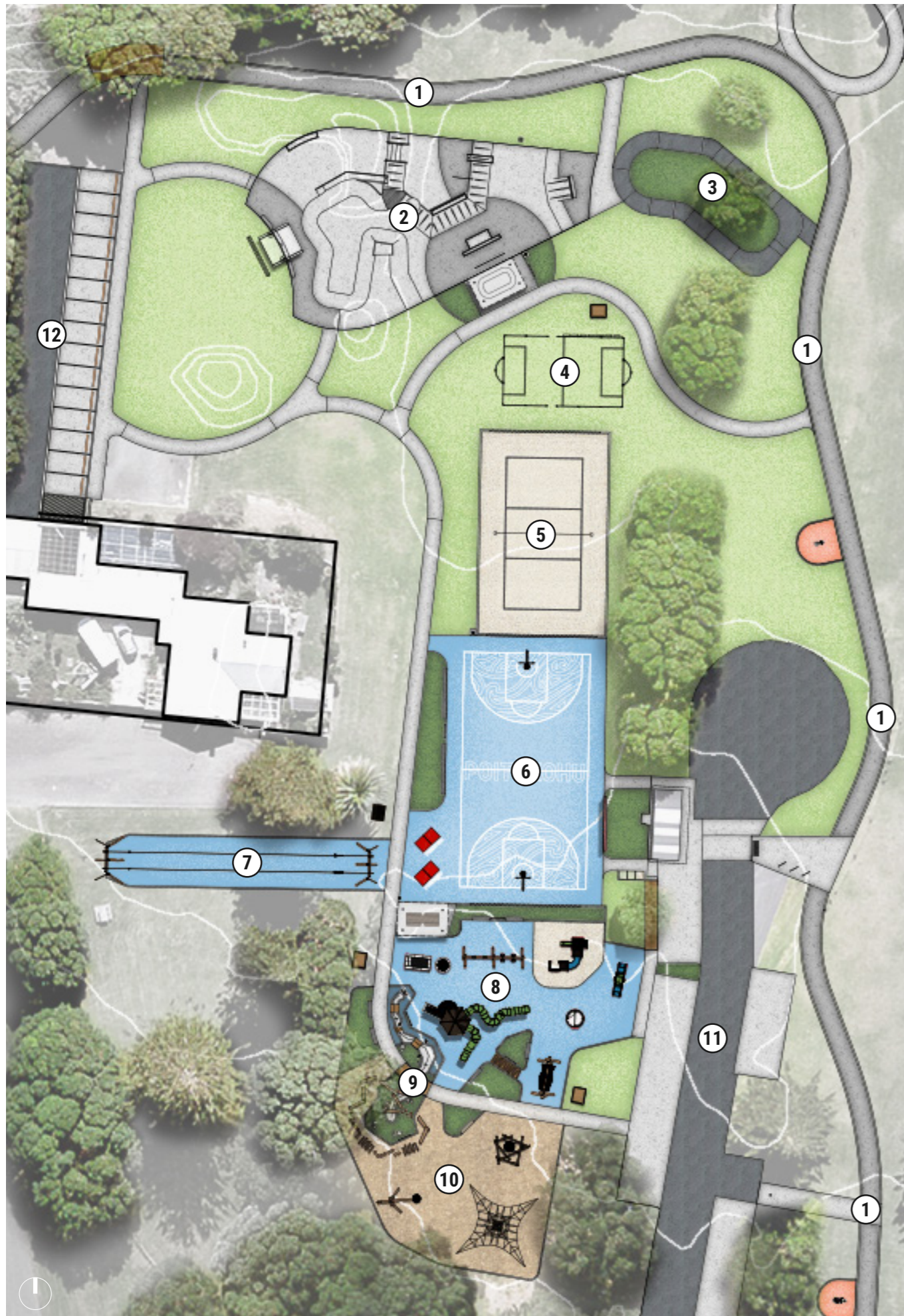
NPDC Parks team raised an issue around the existing trees heavily impacting the current playground. Due to increased shade and moisture, the trees have made the existing playground unusable outside of warmer months. This has also caused an environment for the tree roots to grow aggressively and effect safety surfacing, making the play space unsafe without constant maintenance. Working with manawhenua we have developed a design that identifies select trees for removal that can strategically open the space to greater sunlight. We have also shown new equipment to be outside of any tree root zones meaning changes in playground layouts. Any removed tree will be replaced elsewhere on site in a more appropriate location.

Existing Net Structure

NPDC Parks have also indicated that the existing net structure at the playground is relatively new and have asked if we could retain it within the new playground. We explored relocating but due to the complexity of the structure this wasn't an option. To maintain sustainable practices, we have chosen to retain the net structure within the new play space. The proposed playground layout was adjusted to include this item.

LEGEND

- ① EXISTING COASTAL WALKWAY
- ② EXISTING SKATE PARK
- ③ PUMP TRACK
- ④ FENCED FOOTBALL
- ⑤ SAND VOLLEYBALL COURT
- ⑥ SPORTS COURT RENEWAL & OUTDOOR TABLE TENNIS
- ⑦ FLYING FOX
- ⑧ PLAYGROUND RENEWAL
- ⑨ WETLAND WATERPLAY
- ⑩ NATURE PLAY
- ⑪ EXISTING CARPARK
- ⑫ SKATE CARPARK



OTUPAIIA | ROADMAP

Phase 2	17-Mar-25	31-Mar-25	14-Apr-25	28-Apr-25	12-May-25	26-May-25	9-Jun-25	23-Jun-25	7-Jul-25	21-Jul-25	4-Aug-25	18-Aug-25	1-Sept-25	15-Sept-25	29-Sept-25	13-Oct-25	27-Oct-25	10-Nov-25	24-Nov-25	8-Dec-25	22-Dec-25	5-Jan-26	19-Jan-26	2-Feb-26	16-Feb-26	2-Mar-26	16-Mar-26	30-Mar-26	13-Apr-26	27-Apr-26	
Civil Engineering Contract	█	█																													
Design and Engineering			█	█	█	█	█	█	█	█	█	█	█	█	█																
Play Equipment and Safety Surface Tender																█	█	█													
Civil + Pump Track Tender																		█	█	█											
Civil Works																							█	█	█	█	█	█	█	█	
Pump Track Works																							█	█	█	█	█	█	█	█	
Play Equipment and Safety Surface Works																										█	█	█	█	█	█

Contractors close